

Se e be Oc be

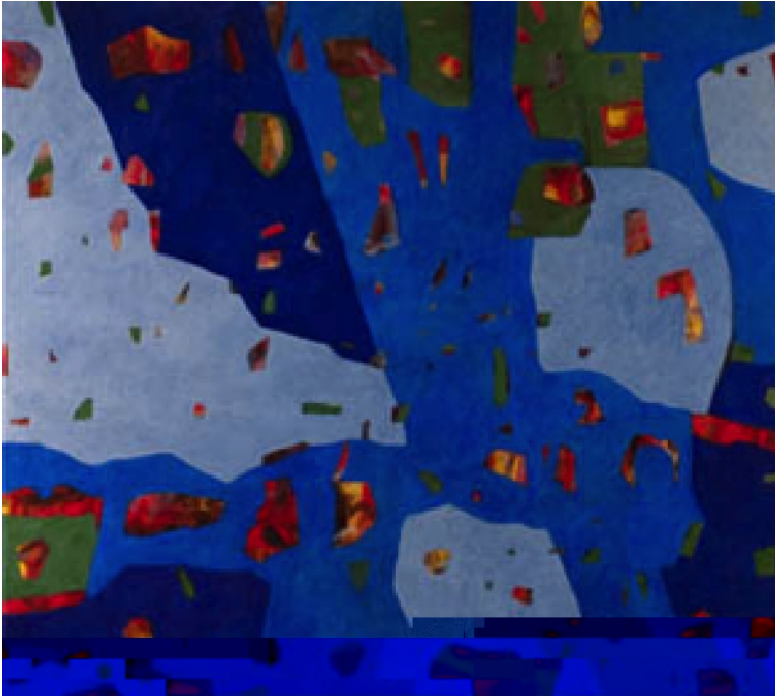
Across the Border: Perception and Reality



The Immigrant's Dream: The American Response

October December

Transitions



Gregory Huebner, Transition #10, acrylic

January February April April
April April April
April
April

Feb a A

Unveiled Layers:



Nhat Tran, A Nonsensical Affection (2010)



Orie Shafer Angela's Vision (2010), oil and mixed media on canvas, 38 in x 72 in

Unveiled Layers

A

A

A

A

A

A

Ma

2011 Senior Art Majors Exhibition

A

A